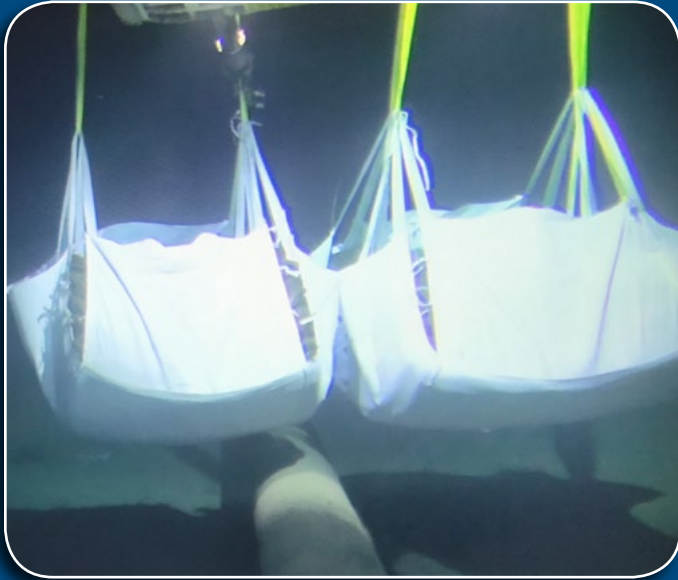


# SLINGBAG®



## PROJECT > DOF Subsea Pipeline Support

SlingBag® 60 lb 3-1 Mix (Sand-Cement) Burlap Bags  
Gulf of Mexico



### PROJECT DESCRIPTION:

**The Problem:** Provide Pipeline Support, Stabilization and Protection for the newly installed pipeline on the Stampede Platform in the Gulf of Mexico

**The Solution:** DOF Subsea deployed 378 SlingBag® containing 21,168 burlap 60 lb bags along the pipeline. SlingBag® were installed in pyramid formations at points chosen along the pipeline.

The 3-1 (Sand/Cement) material content in this SlingBag® application is a high strength, 4000 PSI sand-cement blend, will bond together as one unit and require no punching holes in the bags for reinforcement. The sand cement blend is formulated to harden in or out of water after initial placement, is harmless to wildlife and as the bags degrade, there

is the appearance of a nature stone. The SlingBag® patented system is designed to efficiently and safely store, move and place the bags 5 times faster and safer than conventional methods – **EVERY TIME!**

The grass & soil were removed, reinforcement was used to hold the starter bags and then the remaining bags placed.

SlingBag® contains 56 each 60 lb Burlap Bags Revetment (Sand-Cement), 3-1 or Pure Sand, as required.

**GENERAL CONTRACTOR:** DOF Subsea

### SlingBag® PRODUCTS USED:

- 378 SlingBag® (No. NR83999)
- 60 lb Sand-Cement (21,168 bags)

**PROJECT START:** May 2017

**COMPLETION DATE:** June 2017

